

## Short Report



Cultural History Museum at Mühlhausen | ©Sylvia Engel

## Kulturhistorisches Museum

Kristanplatz 7  
99974 Mühlhausen

Tel: +49 (0) 3601 85660  
Fax: +49 (0) 3601 856626

info@mhl-museen.de  
<http://www.muehlhaeuser-museen.de>

## Welcome!

The main building of the Mühlhausen museums was originally built as a grammar school in the neo-Renaissance style between 1868 and 1870. Since the founding of a local history museum in 1928, the building on Lindenbühl has been used primarily as a museum. After extensive modernization in 2013, the building reopened as a cultural history museum.

The redesigned permanent exhibitions show the most important pieces from the collection on the prehistory and early history of the Unstrut-Hainich district, the history of the city and Thuringian art of the 20th century.

## Overview

- Parking spaces in the public area Untermarkt or Lindenbühl with a distance of over 100 m to the museum in the old town of Mühlhausen Museum entrance via steps to the museum ticket office
- Side entrance with lift
- Exhibitions on Mühlhäuser STADTgeschichten, on KunstLAND Thüringen, UNSTRUT-HAINICH-tiefgründig on all floors and special exhibitions

## Accessibility at a glance

- Parking spaces in the public area Untermarkt or Lindenbühl with a distance of over 100 m to the museum in the old town of Mühlhausen.
- Museum entrance via steps to the museum ticket office
- Side entrance with lift and call system with bell to service staff
- Exhibitions on Mühlhausen's STADTgeschichten, on KunstLAND Thüringen, UNSTRUT-HAINICH-deeply accessible on all floors by lift
- and special exhibitions
- Toilet for people with disabilities and changing table for small children

Translated with [www.DeepL.com/Translator](https://www.DeepL.com/Translator) (free version)

# Information for people with walking difficulties and wheelchair users

We have compiled some **information on accessibility** below. Detailed information can be found in the test report at the end of the text.

- Public parking spaces are located at Untermarkt with a distance of 250 meters and Lindenbühl with a distance of 100 meters. Exterior paths are at least 250 cm wide. Their surface condition is not low in vibrations and they are easy to walk and drive on. There is a longitudinal slope of max. 3% on 100 m. There are no seating facilities.
- Access to the building is stepless via the side entrance with elevator with horizontal control panel (door: 92 cm, cabin: 133 cm x 146 cm).
- All rooms and facilities that can be used by guests and are elevated are accessible without steps.
- Doors are at least 92 cm wide.
- Existing passages in corridors are at least 88 cm wide. Passages in rooms are at least 105 cm wide.
- Exhibits are predominantly visible, perceptible or recognizable while seated. Exhibit information is predominantly legible while seated.
- The cash register is 77 cm high at the lowest point.
- Assistance dogs (companion dogs, guide dogs for the blind, etc.) may be brought into all relevant areas of the facility.
- The following assistive devices are provided: Wheelchair
- Guided tours are offered for people with walking disabilities and wheelchair users. Pre-registration for the guided tour is required. The entire route of the tour is step-free for wheelchair users. Mobile or fixed seating is available for people with walking disabilities to use during the tour.

## Public WC for people with disabilities

- There is a unisex toilet available.
- The movement areas are:
  - in front of the washbasin 150 cm x 150 cm;
  - in front of the WC 150 cm x 150 cm;
  - to the left of the WC 150 cm x 70 cm;
  - to the right of the WC 84 cm x 70 cm.
- There are fold-up grab bars to the left and right of the WC.
- The washbasin is accessible at a height of 67 cm and a depth of at least 30 cm.
- There is a cord as an alarm trigger.

# Information for people with hearing impairments and deaf people

We have compiled some **information on accessibility** below. Detailed information can be found in the test report.

- An outgoing emergency call in the elevator is confirmed acoustically, e.g. by an intercom system, and visually, e.g. by a digital text field.
- There is no inductive hearing system at the ticket office.
- There is an alarm, but without a flashing or strobe signal.

## Information for visually impaired and blind people

We have compiled some **information on accessibility** below. Detailed information can be found in the test report.

- The main and side entrances can be identified by a tactile change in the floor covering and are visually contrasted with the surroundings.
- There are partially glass doors without safety markings at a height of 40-70 cm and 120-160 cm.
- There are no obstacles (e.g. objects protruding into rooms or corridors).
- Stairs have handrails on at least one side.
- On some stairs, there is a visual contrast between the flooring and the stair risers or risers. Stairs do not have visually contrasting edges at the first and last steps.
- The main "walkways" in the room are visually contrasted and some are tactile.
- There is visual contrast between the exhibits and the surroundings.
- Exhibits are generally well lit.
- Exhibit signage is visually contrasting.
- Information is conveyed in writing, audibly, and photo-realistically.
- An outgoing emergency call in the elevator is acoustically confirmed, e.g., by an intercom system.
- The stop position is announced by voice.
- The operating elements in the elevator are designed with high visual contrast and are tactilely detectable.
- Assistance dogs may be brought into all relevant areas of the museum.
- The following technical options for conveying information are available: Audioguide
- Guided tours for people with visual impairments are offered. Pre-registration for the guided tour is required.

# Information for guests with cognitive impairments

We have compiled some **information on accessibility** below. Detailed information can be found in the test report.

- The name or logo of the establishment/facility is clearly recognizable from the outside.
- The cash register is directly visible from the entrance door or the path to it is marked pictorially and without interruption.
- The destination of the route is within sight or route signs are at a constantly visible distance or an uninterrupted route guidance system is in place.
- Information is conveyed in writing, acoustically, or photo-realistically.
- Assistance dogs may be brought into all relevant areas of the museum.
- Guided tours for people with cognitive impairments are offered in plain language. Pre-registration for the guided tour is required.

## Comfort for all generations

We have compiled some **information on accessibility** below. Detailed information can be found in the test report at the end of the text.

- Public parking spaces are located at Untermarkt with a distance of 250 meters and Lindenbühl with a distance of 100 meters. They are of the surface condition not low vibration and easy to walk and drive on. There is a longitudinal slope of max. 3% on 100 m. There are no seating facilities.
- Access to the building is stepless via the side entrance with elevator with horizontal control panel (door: 92 cm, cabin: 133 cm x 146 cm). The controls in the elevator are visually contrasting.
- The main and side entrances are visually contrasting to the surroundings.
- The name or logo of the establishment/facility is clearly recognizable from the outside.
- All rooms and facilities that can be used by guests and are elevated are accessible without steps.
- Doors are at least 92 cm wide.
- Existing passages in corridors are at least 88 cm wide. Passages in rooms are at least 105 cm wide.
- The destination of the route is within sight or route signs are at a constantly visible distance or there is an uninterrupted route guidance system.
- The cash register is directly visible from the entrance door or the route to it is marked pictorially and without interruption.
- The cash register is 77 cm high at the lowest point.
- There is an alarm, but without flashing or strobe signal.

- There are partial glass doors without safety markings at a height of 40-70 cm and 120-160 cm.
- There are no obstacles (e.g. objects protruding into rooms or corridors).
- Stairs have handrails on at least one side.
- On some stairs, there is a visual contrast between the flooring and the stair risers or risers. Stairs do not have visually contrasting edges at the first and last steps.
- There is visual contrast between the exhibits and the surrounding area.
- Exhibits are generally well lit.
- Exhibit signage is visually contrasting.
- Information is conveyed in written, audio, and photorealistic form.
- The following assistive devices are provided: Wheelchairs, audio guides, QR codes, films.
- A public toilet is available.
- Guided tours are offered for people with walking or visual disabilities. Pre-registration for the tour is required. The entire tour route is step-free. Mobile or fixed seating is available for use during the tour.



# Image Gallery

We have put together some photos from the company / offer for you. You can find more photos in the detailed reports.

---



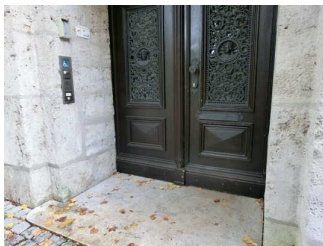
Path from Lindenbühl car park with gateway to side entrance with lift

©Sylvia Engel



Museum entrance with steps - note on side entrance

©Sylvia Engel



Side entrance with lift - call system and bell to service staff

©Sylvia Engel



Museum box office and information - 6 steps to the ticket office

©Sylvia Engel



Public toilet for people with disabilities

©Sylvia Engel



Passage and text panel on the exhibition's circular route on the ground floor

©Sylvia Engel



Exhibition on the ground floor - listening stations

©Sylvia Engel



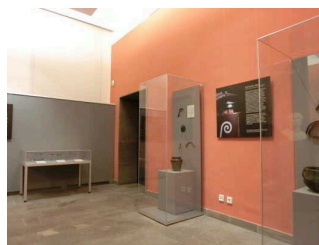
Exhibition KUNSTLAND Thüringen upper floor - Listening station

©Sylvia Engel



Exhibition KUNSTLAND Thüringen upper floor - Action corner Memory

©Sylvia Engel



Exhibition UNSTRUT-HAINICH deep upper floor

©Sylvia Engel