

Short Report



Bio-Seehotel Zeulenroda | Bio Seehotel Zeulenroda

Bio-Seehotel Zeulenroda

Bauerfeindallee 1
07937 Zeulenroda-Triebes

Tel: +49 36628 980
Fax: +49 36628 98100

info@bio-seehotel-zeulenroda.de
www.bio-seehotel-zeulenroda.de

Provider: Bio-Seehotel Zeulenroda GmbH & Co. KG

Bauerfeindallee 1
07937 Zeulenroda-Triebes

info@bio-seehotel-zeulenroda.de

Welcome!

In the middle of the Thuringian Vogtland begins your well-deserved time out from everyday life. The multiple award-winning 4-star superior hotel awaits you with a high level of quality and family atmosphere. The idyllic location on the shore of the Zeulenroda Dam will inspire you. The barrier-free rooms of the Bio-Seehotel offer generous living comfort with wide corridors large sanitary areas and sufficient freedom of movement. With the help of the pool lift, an uncomplicated entry and exit into the infinity pool of the Panorama Spa is possible.

The handling with ecological food is a matter of the heart. A large part of the hotel kitchen is sourced from the region and spoils you with products from its own organic bakery and butchery.

TEST RESULT

for

Bio-Seehotel Zeulenroda

07937 Zeulenroda-Triebes, Certificate-ID: PA-10195-2022



This offer was classified according to
the criteria of the nationwide label

»Tourism for All«

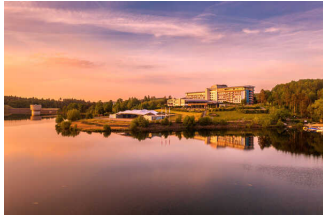
and, in the period from

April 2023 – March 2026

is entitled to use the label

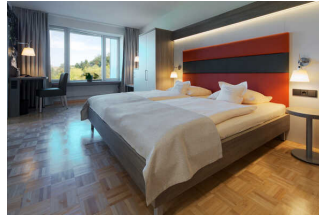
»Accessibility checked«

and the associated pictograms
in accordance with the contract.



Bio-Seehotel
Zeulenroda

©Bio-Seehotel Zeulenroda



Bio-Seehotel
Zeulenroda

©Bio-Seehotel Zeulenroda

Overview

- 4-star Superiour Hotel on the shore of the Zeulenrodaer Meer in the Thuringian Vogtland.
- High-quality organic cuisine with food from the region – in-house bakery and butchery
- 1,600 sqm Panorama Spa with infinity pool, various saunas and beauty area with treatments especially for children
- TOP hosts Thuringia = hosts with passion

Accessibility at a glance

- Parking space for people with disabilities
- Eight barrier-free designed rooms
- Building accessible without steps
- All rooms and facilities that can be used by guests and are raised are accessible without steps, via elevators or a ramp
- 90 cm minimum width of all raised passages/doors
- WC for people with disabilities
- Large shower without thresholds
- Shower chair or seat available
- Passenger lift for swimming pool
- Bowling alley for wheelchair users
- Assistance dogs welcome

Information for people with walking difficulties and wheelchair users

All areas relevant for testing meet the quality criteria of the label "**Accessibility certified – accessible for people with walking disabilities and partially accessible for wheelchair users**".

Some **information on accessibility** are listed below. For detailed information please see the evaluation report.

- There are two marked parking spaces for people with disabilities (parking space size: 350 cm x 600 cm).
- The bus stop „Zeulenroda Seehotel“ is 30 m away.
- The path from the bus stop/parking spaces to the entrance is 30 m long. It is easy to walk and drive on.
- The hotel is steplessly accessible.
- All evaluated rooms and facilities available to the guests are steplessly accessible or via a ramp or elevator
- The elevator cabin measures 110 cm x 205 cm.
- The ramp in the spa area has a maximum gradient of 6 % and a total length of 9 m.
- All evaluated passageways/doors available to the guests are at least 90 cm wide. Exception: In the spa area the cold chamber and the steam sauna are 64 cm and 76 cm wide.
- The reception desk is at its lowest point 70 cm high. There is another, equivalent communication possibility while in a sitting position.
- External paths are at least 400 cm wide, easy to walk on and drive on and have a maximum longitudinal gradient of up to 6 %. There is seating available.
- In the changing rooms of the spa area, the manoeuvring spaces are at least 150 cm x 150 cm.
- In most saunas there is room for wheelchairs or the manoeuvring spaces are at least 145 cm x 145 cm.
- There is a passenger lift for entering the swimming pool.
- There are wheelchair accessible tables available in the gastronomy areas (maximum height 80 cm, wheelchair accessible at a height of 67 cm and a depth of 30 cm).
- Offered aids: wheelchair and wheelchair for the sauna, (wheeled) walker, height adjustable nursing bed (external service provider)

Room 15 (single room)

- The manoeuvring spaces in front of essential stationary furnishings (e.g. wardrobe) and right of the bed are at least 145 cm x 150 cm.
- The bed is 48 cm high.
- The manoeuvring spaces in the bathroom are:
in front of/behind the door, in front of the toilet and the washbasin at least 150 cm x 150 cm;
left of the toilet 100 cm x 55 cm and right of the toilet 33 cm x 55 cm.

Room 122 (double room)

- There are three other identical rooms.
- The manoeuvring spaces in front of essential stationary furnishings (e.g. wardrobe) and right and left of the bed are at least 150 cm x 150 cm.
- The bed is 48 cm high.
- The manoeuvring spaces in the bathroom are:
in front of/behind the door, in front of the toilet and the washbasin at least 150 cm x 150 cm;
left of the toilet 88 cm x 70 cm and right of the toilet 200 cm x 70 cm.

Room 12.1 and 12.2 (multi bed-room)

- The manoeuvring spaces in front of essential stationary furnishings (e.g. wardrobe) and of the bed are at least 120 cm x 150 cm.
- The bed is 53 cm high.
- The manoeuvring spaces in the bathroom are:
in front of/behind the door, in front of the toilet and the washbasin at least 150 cm x 150 cm;
left of the toilet 30 cm x 70cm and right of the toilet 90 cm x 70 cm.

In all elevated rooms applies in the bathroom:

- There are grab rails available on the right and left of the toilet. The grab rails can be flipped-up.
- The sink is wheelchair compatible.
- The mirror can be seen while standing or sitting.
- The shower is accessible without thresholds.
- The manoeuvring space in the shower is 150 cm x 150 cm.
- A shower seat is available or can be provided if required.
- There are grab rails available in the shower.
- An alarm trigger is available.

Public WCs for people with disabilities

In all public WCs for people with disabilities applies:

- There are grab bars to the left and right of the WC. The grab rails can be folded up.
- The washbasin is accessible from below.
- The mirror can be viewed while standing or sitting.
- There is an alarm release device.
- The movement areas are as follows:
- **in the WC for people with disabilities (reception area):**
in front of/behind the door, in front of the WC and in front of the washbasin at least 150 cm x 150 cm;
to the left of the WC 101 cm x 70 cm and to the right of the WC 22 cm x 70 cm.
- **in the WC for people with disabilities (concert area):**
in front of/behind the door, in front of the WC and in front of the washbasin at least 150 cm x 150 cm;

to the left of the WC 135 cm x 70 cm and to the right of the WC 30 cm x 70 cm.

- **in the WC for people with disabilities (restaurant):**
in front of/behind the door, in front of the WC and in front of the sink at least 150 cm x 145 cm;
to the left of the WC 97 cm x 72 cm and to the right of the WC 27 cm x 72 cm.
- **in the WC for people with disabilities (spa area):**
in front of/behind the door, in front of the WC and in front of the washbasin at least 150 cm x 150 cm;
to the left of the WC 88 cm x 71 cm and to the right of the WC 101 cm x 71 cm.
- **in the WC for people with disabilities (starfish panorama stage):**
in front of/behind the door, in front of the WC and in front of the sink at least 150 cm x 150 cm;
to the left of the WC 90 cm x 73 cm and to the right of the WC 140 cm x 73 cm.

Information for people with hearing impairments and deaf people

All areas relevant for testing meet the quality criteria of the label "**Accessibility certified – partially accessible for people with hearing impairment and deaf people**".

Some **information on accessibility** are listed below. For detailed information please see the evaluation report.

- The alarm is clearly visible in the entire building.
- An outgoing emergency call in the elevators is confirmed visually.
- In the in the gastronomy areas there are tables with bright and glare-free lighting, on which there are no lamps standing or hanging that interfere with the field of vision or eye contact.
- There are seating areas with low background noises (e.g. corner seating, separate room).
- Offered aids: oscillating alarm clock
- In the rooms 12, 15, 122, 222, 322, 422 (single room and double room) is at least one electrical outlet available near the bed.
- The ringing is indicated by a flashing signal which can be detected in all rooms.
- WiFi is offered.

Information for visually impaired and blind people

All areas relevant for testing meet the quality criteria of the label "**Accessibility certified – partially accessible for people with visual impairments and blind people**".

Some **information on accessibility** are listed below. For detailed information please see the evaluation report.

- Assistance dogs are allowed in relevant areas/rooms.
- External paths usually have visually contrasting and tactilely detectable sidewalk boundaries.
- The entrances are visually rich in contrast and recognizable by a tactile change of floor covering.
- All evaluated and usable areas for the guest are well illuminated, i.e. bright and glare-free.
- There are no visually contrasting or tactilely detectable floor indicators available.
- The signage is designed in clearly legible and contrasting font.
- Information for orientation can be captured tactilely (e.g. relief or prismatic writing).
- An outgoing emergency call in the elevator is confirmed audibly. The break position is announced by spoken commands. The operating controls are visually rich in contrast and tactilely detectable.
- The pool edges are visually contrasted.
- The menu fonts are straightforward and visually rich in contrast. There is a menu in large print, but none in braille.
- Offered aids: reading aids (reading glasses)

Information for guests with cognitive impairments

All areas relevant for testing meet the quality criteria of the label "**Accessibility certified – accessible for with cognitive impairments**".

Some **information on accessibility** are listed below. For detailed information please see the evaluation report.

- The name or logo of the hotel is clearly recognizable from the outside.
- The objectives of the paths are always within sight or signs in visible distance are available.
- There is a colored guidance system available.
- Information for orientation is partly with pictorial symbols (pictograms, photorealistic representation).
- The dishes are visibly presented (buffet, bar).
- There is no information in easy language.

- Information is displayed with pictograms or images.

Information for allergy sufferers and people with food intolerances

We have compiled some **information for allergy sufferers** below. Detailed information can be found in the test report.

Animal hair

- No animals on the premises or in its immediate vicinity.
- Pet-free rooms available.

House dust

- Short pile carpet in accessible areas that is vacuumed daily. Smooth floor in accessible areas that is damp mopped daily.
- Allergen-proof protective covers (encasings) available for mattresses, comforters and pillows.
- Allergy-safe comforters and pillows without down available.

Food intolerances

- Information for allergy sufferers and guests with special dietary requirements (e.g. restaurants, health food stores) available.
- Information on the ingredients of the food used (also available on request).
- Food free of flavor enhancers, organic food, gluten-free, fructose-free, vegetarian and vegan food: at least 1 dish on the menu. Food free of major allergens and lactose-free: on request.

Comfort for all generations

We have compiled some **information on accessibility** below. Detailed information can be found in the test report.

- There is a general parking lot.
- The Zeulenroda Seehotel bus stop is 30 meters away. The city of Zeulenroda has a call bus system. This can be informed by the reception.
- The path between the parking lot/bus stop and the entrance is about 30 m long. It is easy to walk and drive on.

- Exterior paths are at least 400 cm wide. They are easy to walk and drive on and have maximum longitudinal slopes of up to 6%.
- Seating is provided.
- Hotel name or logo are clearly recognizable from the outside.
- Entrances are visually contrasting.
- The hotel is accessible without steps.
- All rooms and facilities that can be used and elevated by guests are accessible without steps or via a ramp or elevators.
- The elevator cabins are 110 cm x 205 cm. The ramp in the spa area has a maximum slope of 6% and a total length of 9 meters.
- All doors/passages that can be used by guests and are elevated are at least 90 cm wide. Exceptions: In the spa area, the doors to the cold chamber and steam sauna are only 64 cm and 76 cm wide, respectively.
- All raised areas that can be used by guests are well lit, i.e. bright and glare-free.
- In the changing rooms of the spa area, the movement areas are at least 150 cm x 150 cm.
- In most saunas, the movement areas are at least 145 cm x 145 cm.
- There is a passenger lift to enter the pool. The pool edges in the swimming pool are visually contrasting.
- Available aids: wheelchair (including bathing and sauna wheelchairs), walker, reading aids (reading glasses, magnifying glasses), movement app to guide you through the building, vibrating alarm clock, keypad with direct contact to reception.
- The alarm is clearly visually perceptible throughout the building.
- There is an inductive hearing system at the reception desk and in the "Hecht" conference room. Additional inductive hearing systems are available upon request.
- An outgoing emergency call in the elevators is visually confirmed.
- Tables with bright and glare-free lighting are available in the catering areas. There are seating areas with low ambient noise (e.g., seating area, separate room).
- Ability to assemble meals individually by quantity according to need.
- Snacks also available outside of scheduled meal times.
- The font of the menus is designed in a straightforward and high-contrast font. There is a menu in large print.
- There is at least one freely available electrical outlet near the bed in the rooms.
- Wi-Fi is offered.
- Ability to keep medications in a cool place.
- A color-coded wayfinding system is available. Signage is in easy-to-read, high-contrast font.
- Public restrooms at the reception, spa area, concert area, restaurant and Seestern panorama stage.

Room 15 (single room, first floor)

- The movement areas in front of essential, fixed furnishings (e.g. wardrobe) and to the right of the bed are at least 145 cm x 150 cm.
- The bed is 48 cm high.

- The movement areas in the bathroom are:
- in front of/behind the door, in front of the WC and in front of the washbasin at least 150 cm x 150 cm;
- to the left of the WC 100 cm x 55 cm and to the right of the WC 33 cm x 55 cm.
- There are grab rails to the left and right of the WC. The grab rails can be folded up.
- The shower is accessible without thresholds.
- The movement area in the shower is 150 cm x 150 cm.
- A shower seat is available or can be provided if required.
- Grab bars are provided in the shower.
- There is an alarm trigger available.

Room 122 (double room, 1st floor)

- There are three other identical rooms on each floor.
- The movement areas in front of essential, fixed furnishings (e.g., closet) and to the right and left of the bed are at least 150 cm x 150 cm.
- The bed is 48 cm high.
- The movement areas in the bathroom are:
- in front of/behind the door, in front of the WC and in front of the washbasin at least 150 cm x 150 cm;
- to the left of the WC 88 cm x 55 cm and to the right of the WC 200 cm x 55 cm.
- There are grab rails to the left and right of the WC. The grab rails can be folded up.
- The shower is accessible without thresholds.
- The movement area in the shower is 150 cm x 150 cm.
- A shower seat is available or can be provided if required.
- Grab bars are provided in the shower.
- There is an alarm release device.

Rooms 12.1 and 12.2 (shared rooms)

- The movement areas in front of essential, fixed furnishings (e.g. wardrobe) and next to the bed are at least 120 cm x 150 cm.
- The bed is 53 cm high.
- The movement areas in the bathroom are:
- in front of/behind the door, in front of the WC and in front of the washbasin at least 150 cm x 150 cm;
- to the left of the WC 30 cm x 70 cm and to the right of the WC 90 cm x 70 cm.
- There are grab rails to the left and right of the WC. The grab rails can be folded up.
- The shower is accessible without thresholds.
- The movement area in the shower is 150 cm x 150 cm.
- A shower seat is available or can be provided if required.
- Grab bars are provided in the shower.

- There is an alarm trigger available.

Image Gallery

We have put together some photos from the company / offer for you. You can find more photos in the detailed reports.



Parking lot at the main entrance

©Jan Wissgott



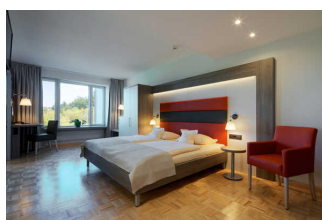
Main entrance

©Jan Wissgott



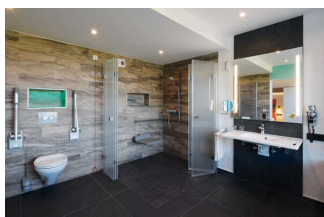
Reception for registration

©Jan Wissgott



**Rooms 122 / 222/
322/ 422 – identical in
construction**

©Bio-Seehotel Zeulenroda



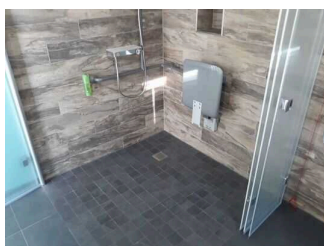
**Rooms 122 / 222/
322/ 422 – identical in
construction**

©Bio-Seehotel Zeulenroda



Room 15

©Jan Wissgott



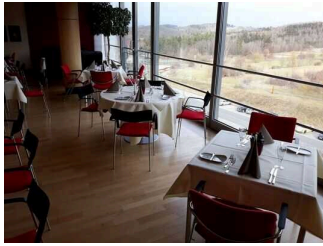
Room 15

©Jan Wissgott



Room 15

©Jan Wissgott



Restaurant

©Jan Wissgott



Sauna

©Jan Wissgott



Spa and Wellness

©Bio-Seehotel Zeulenroda-
Triebs

Information on the "Tourism for All" labeling system

All establishments and locations certified with the label "Tourism for All" meet the following quality criteria:

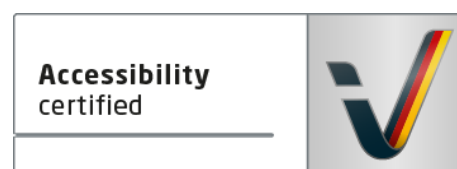
- Data and information on accessibility are collected and checked on site by **external, specially trained evaluators**. The method is not based on self-assessments.
- Data on accessibility is available **in detail** and can be viewed by the guests.
- At least one staff member has successfully passed a **training** on "**Accessibility as a comfort and quality feature**".

The labeling – explanation of the logos and pictograms

The label "**Information about Accessibility**" indicates that detailed and verified information on accessibility is available for all groups of people.



The label "**Accessibility certified**" is based on "Information about Accessibility". It means that the quality criteria defined for specific groups of people are met partially or completely.



The label "**Accessibility certified**" is available in two requirement levels:

"Accessibility certified: partially accessible".

The quality criteria are partially fulfilled for the pictured group of people, i.e. the establishment/location is partially accessible for wheelchair users. The "i" in the pictogram indicates that it is recommended to read again carefully whether the offer meets all (your oder the guest's) individual requirements.



"Accessibility certified: accessible".

The quality criteria are fulfilled for the pictured group of people, i.e. the establishment/location is accessible for wheelchair users.



There are defined quality criteria for **seven groups of people** and a **specific pictogram** for each group.

People with walking disabilities



Wheelchair users



People with hearing impairment



Deaf people



People with visual impairments



Blind people



People with cognitive impairments

